

WASHINGTON

STUDENT ENGAGEMENT NETWORKS

Advancing equity, higher education attainment, and robust financial aid by elevating the diverse voices of Washington's students



Measuring Washington

Jenée Myers Twitchell | Impact Director, Washington STEM
Brian Jeffries | Policy Director, Partnership for Learning



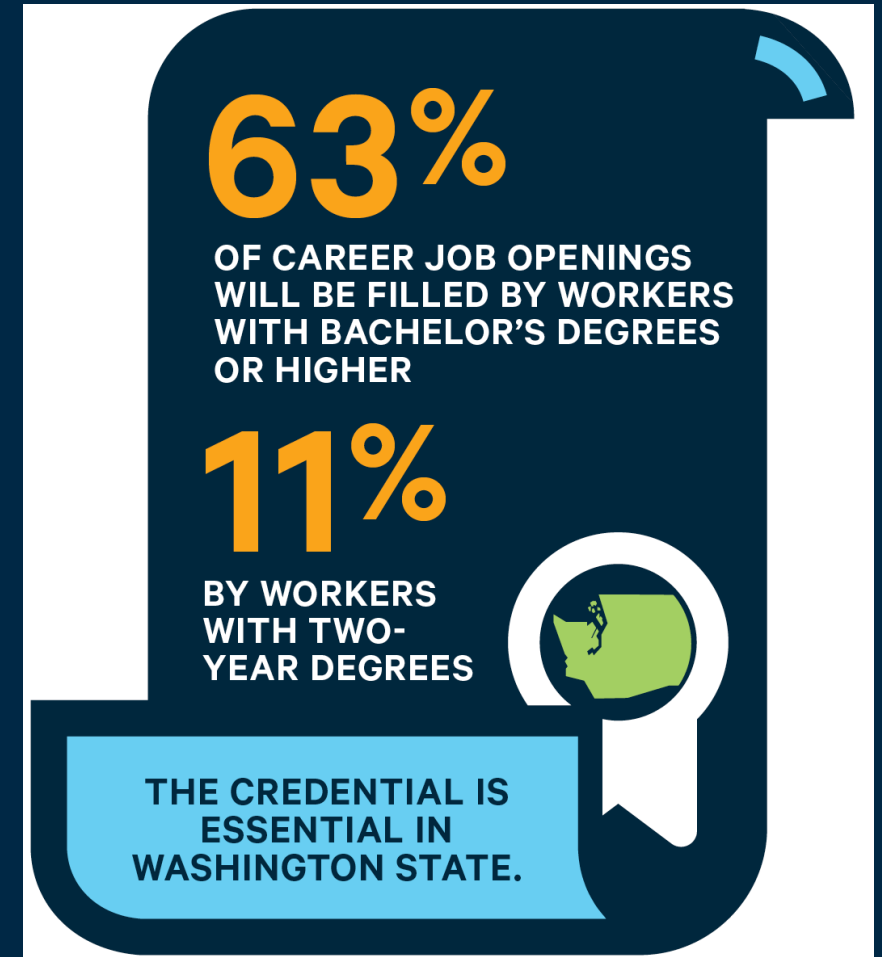
Demand for Credentialed Workers is Higher than Ever

Americans with college degrees can account for all of the net new jobs created over the last decade. In stark contrast, the number of Americans with high school degrees or less who are employed in this ninth year of economic expansion, has fallen by 2,995,000.

– *2018 Brookings Analysis of national household employment data*

Nationally, 55% of jobs that offer a salary of at least \$35,000 (\$45,000 for workers over age 45) are filled by workers with a bachelor's or advanced degree. Another 10% are filled by workers with an associate's degree. – *Georgetown University Center on Education and the Workforce*

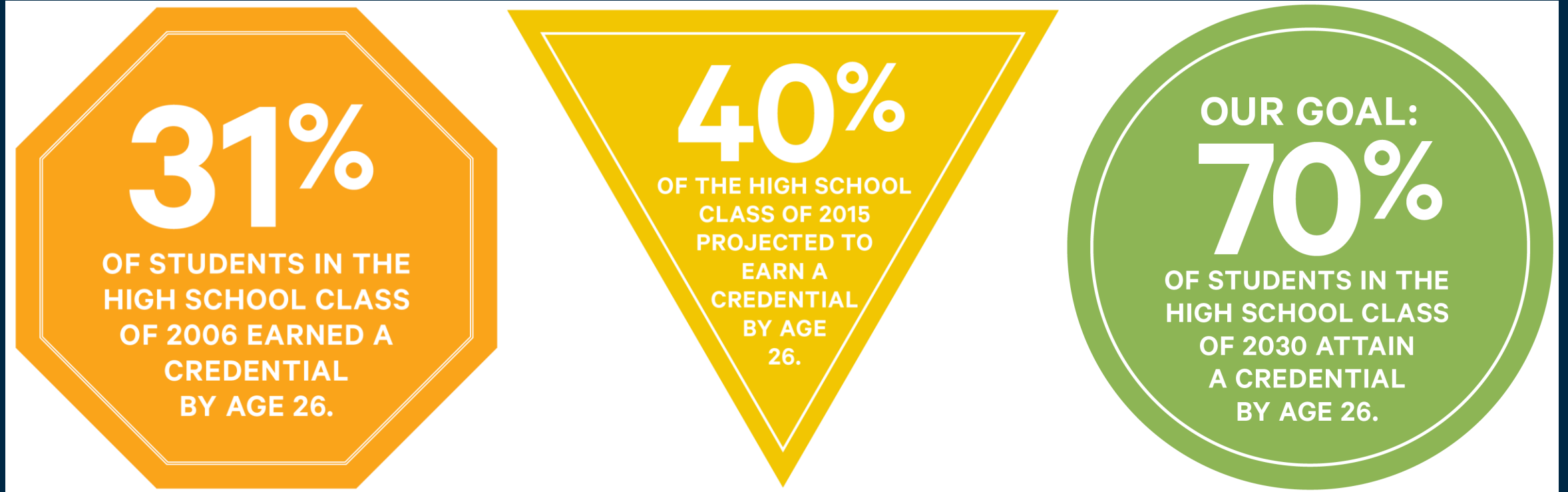
**740,000 JOB OPENINGS
IN OUR STATE BY 2021**



A Credential is Essential in Washington State

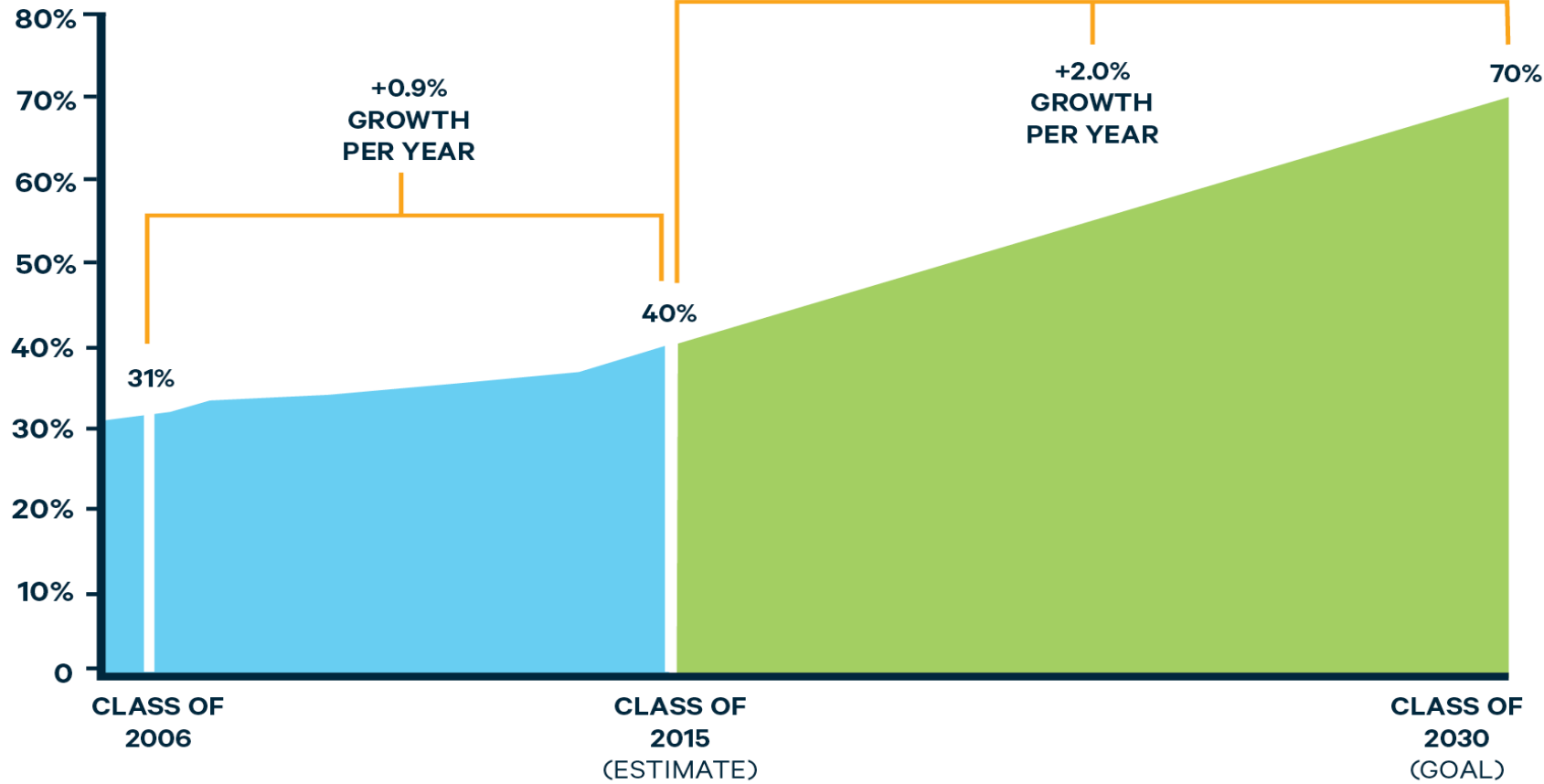


Making Progress on Attainment Since Baseline...



...But Not Nearly Fast Enough

Average Annual Growth in Credential Attainment Must More than Double to Hit 70% Goal by the HS Class of



OUR VISION & GOAL

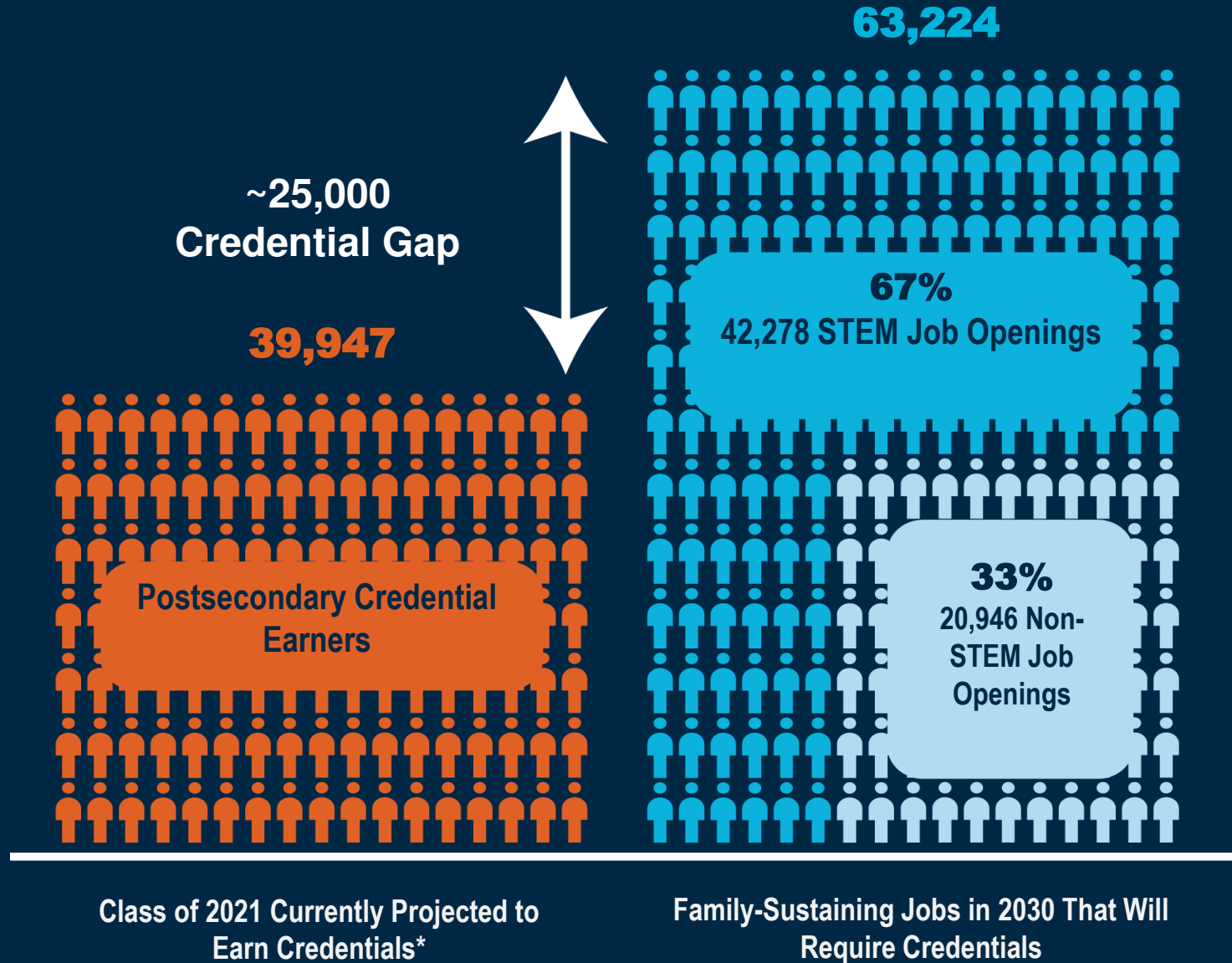


By 2030, Washington students will be career- and future-ready.

- **70%** of Washington youth will earn credentials by age 26.
- The number of students of color, students from low-income and rural families, and young women who are on track to earn high-demand credentials and thrive in our innovation economy will **triple**.



BRIDGING THE GAP: DEMAND FOR STEM TALENT

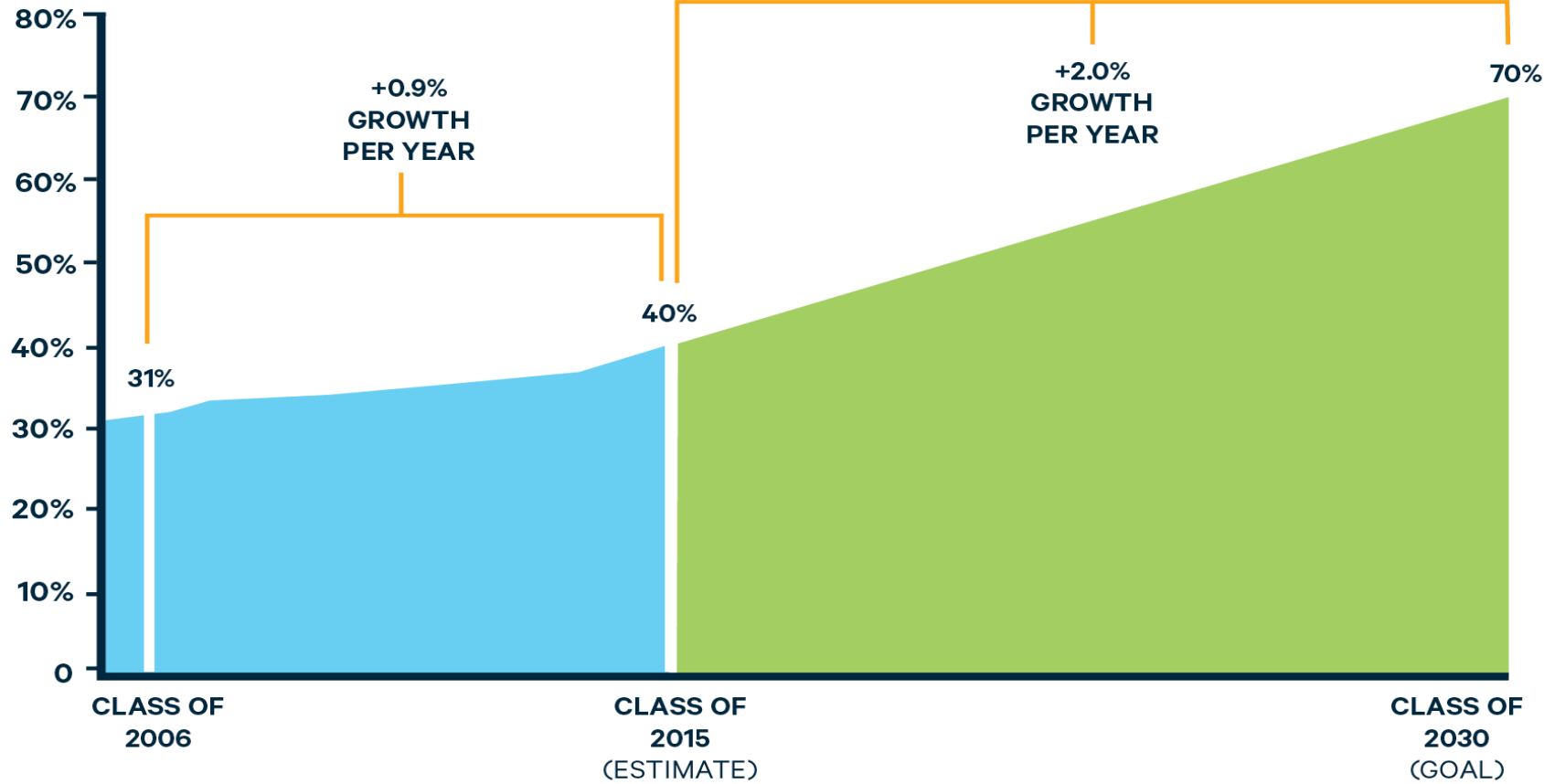


*The class of 2021 will have completed credentials by 2030 and be ready to enter the workforce

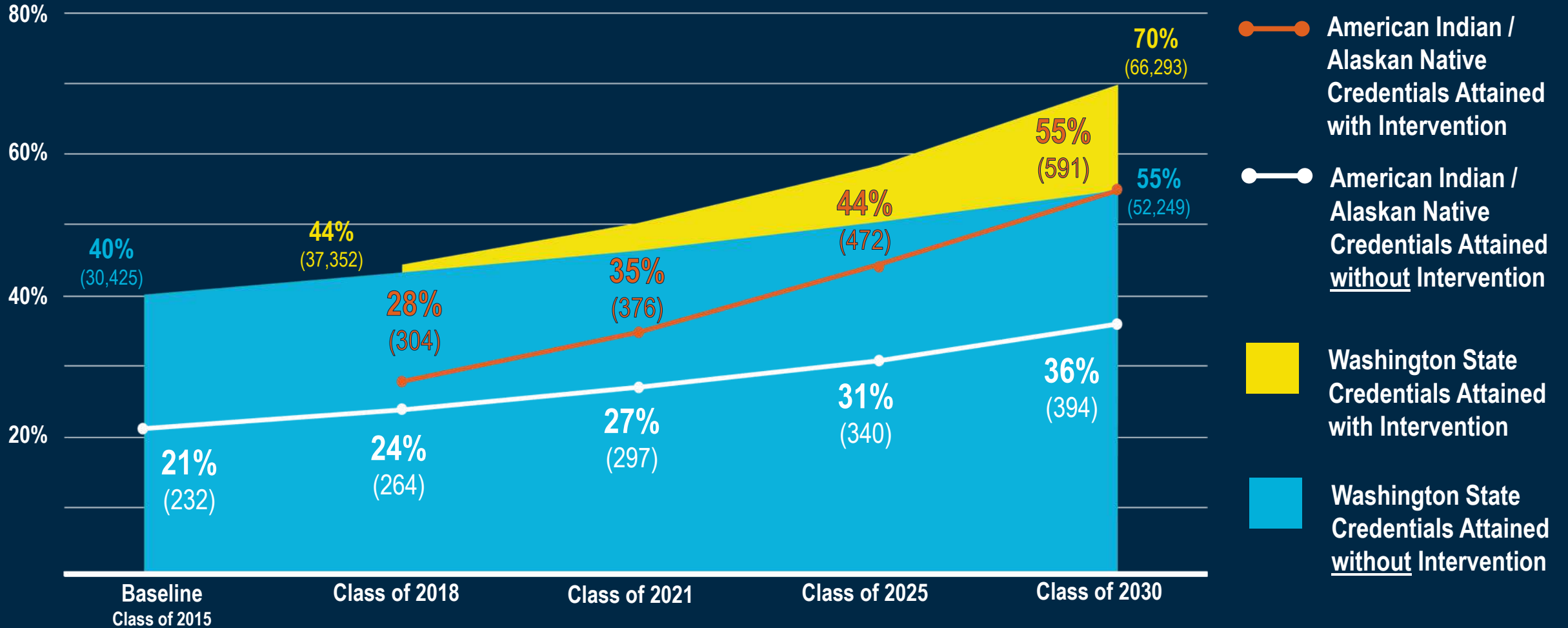
PAUSE & PLAY: JOB OPENINGS IN YOUR REGION

WashingtonSTEM.org/STEMbytheNumbers

Average Annual Growth in Credential Attainment Must More than Double to Hit 70% Goal by the HS Class of

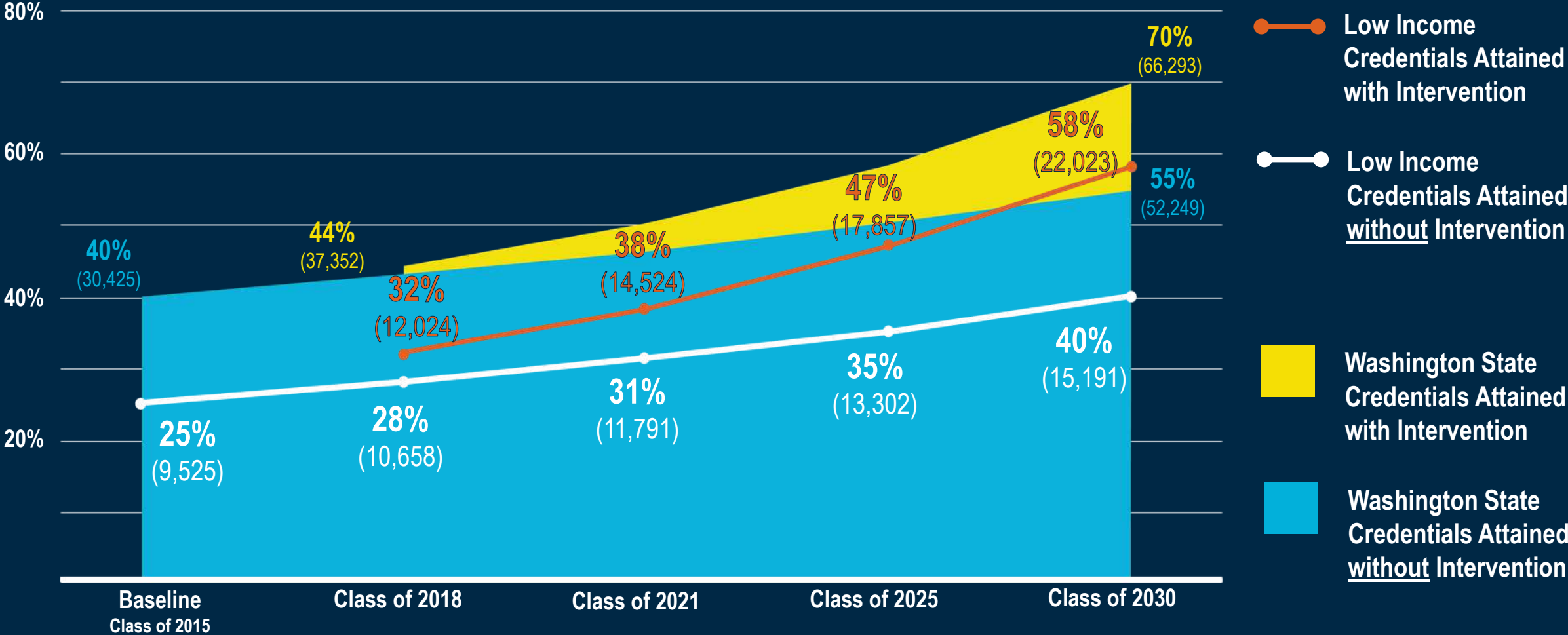


AMERICAN INDIAN / ALASKAN NATIVE



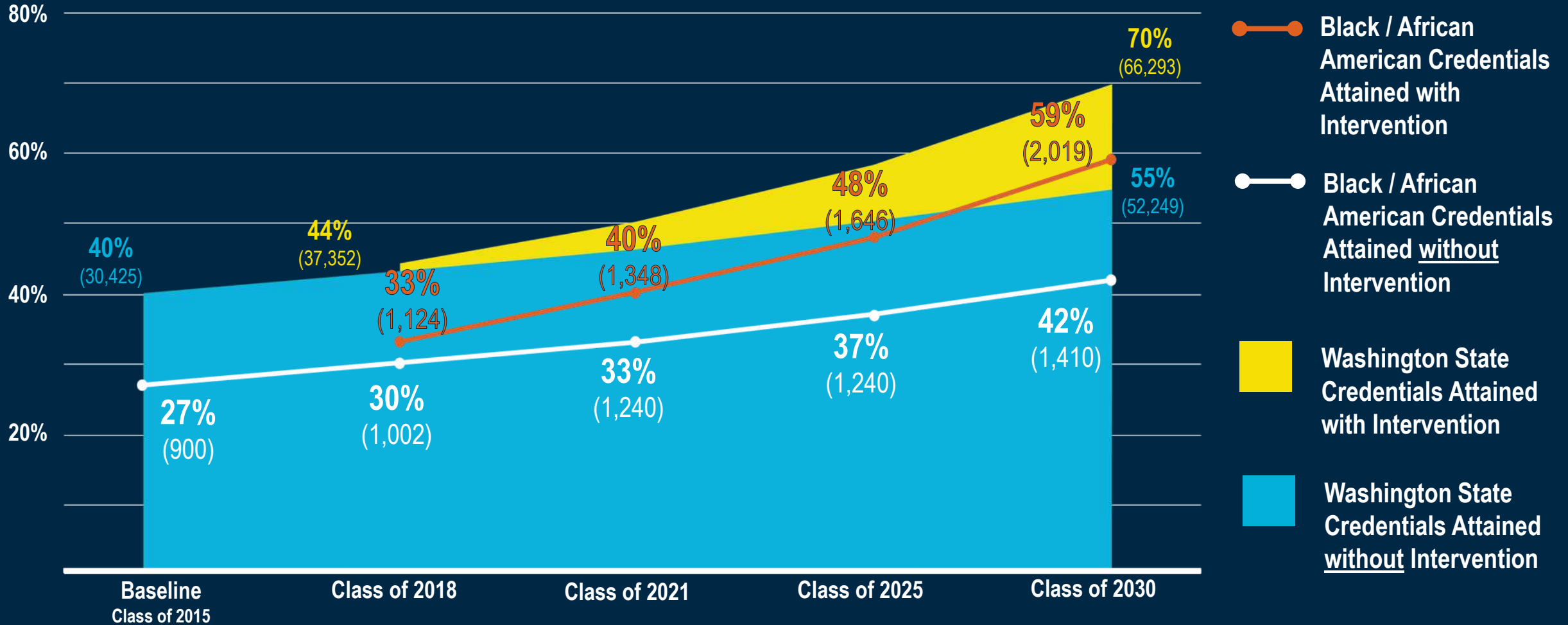
Sources: WA State ERDC 2015, *Credential by Age 26*; ERDC High School Feedback Report; WA State OSPI High School Graduation for Adjusted 5-year Cohort

LOW INCOME



Sources: WA State ERDC 2015, *Credential by Age 26*; ERDC High School Feedback Report; WA State OSPI High School Graduation for Adjusted 5-year Cohort

BLACK / AFRICAN AMERICAN



Sources: WA State ERDC 2015, *Credential by Age 26*; ERDC High School Feedback Report; WA State OSPI High School Graduation for Adjusted 5-year Cohort

LEADING & OUTCOMES INDICATORS

Enrollment in Early Learning Programs
Early Learning Prof. Learning for Adults
Credential Attainment for EL Providers
Early STEM Adult Learning/Confidence*

Kindergarten Math Readiness

Time & Quality of Elem. STEM Learning
% and Number of Teachers of Color
Next Gen. Sci. Standards Implementation
School Climate & School Culture*
Discipline Rates by Demographic*

% of 3rd Graders On Track, Math

Algebra Completion by 8th Grade
College Bound Scholarship Sign Ups
Offering of Rigorous Coursework in HS
CTE Concentrator Trends & Availability*

CADRs + Core 24 Availability & Implem.*
High School & Beyond Plan Implem.*
Counselor : Student Ratios
Absenteeism & Tardiness
CTE & Industry Pathways Completion*
Career Connected Learning Experiences*

Dual Credit Course Completion

Fin. Aid Completion & Awareness*
WSOS Applications & Awards
College Bound Scholarship Use*
College & Apprenticeship Enrollment
High-Demand Credential Capacity*
Pre-College Coursework Rates

Credential Completion by 26

Attainment of Family-Sustaining Jobs*

*Involves significant qualitative parents/guardians/family engagement, awareness and/or feedback.



CREDENTIAL ATTAINMENT (HS Graduates)

59%

of class of 2016
high school
graduates
completed a
presecondary
credential
in
higher
education

20%

42%

of class of 2006
high school
graduates
completed a
presecondary
credential



51%

Latinx



24%

Latinx



DUAL CREDIT (9th-12th graders in '16-'17)

56%

of high school students complete at least one dual credit course (on average they complete 3 to 4 courses)



38%

American
Indian/
Alaskan
Native



58%

Girls



K → 3rd GRADE MATH

KINDERGARTEN

66% of children entering kindergarten are math ready

3RD GRADE MATH

58% of Washington's 3rd graders meet grade level math standards

↓ 45% Native Hawaiian/ Other Pacific Islander

↓ 39% Black/ African American

↑ 73% White

↑ 59% Boys



SYSTEMS CHANGES + KEY INDICATORS



SYSTEMS CHANGES

Direct work outcomes:

- Increased financial aid
- # of state and regional policy wins that scale programs & pathways (e.g. dual credit incentives)
- # of high-demand career pathways in place and % of students engaged
- # employers engaged (e.g. offer internships) and % target students served



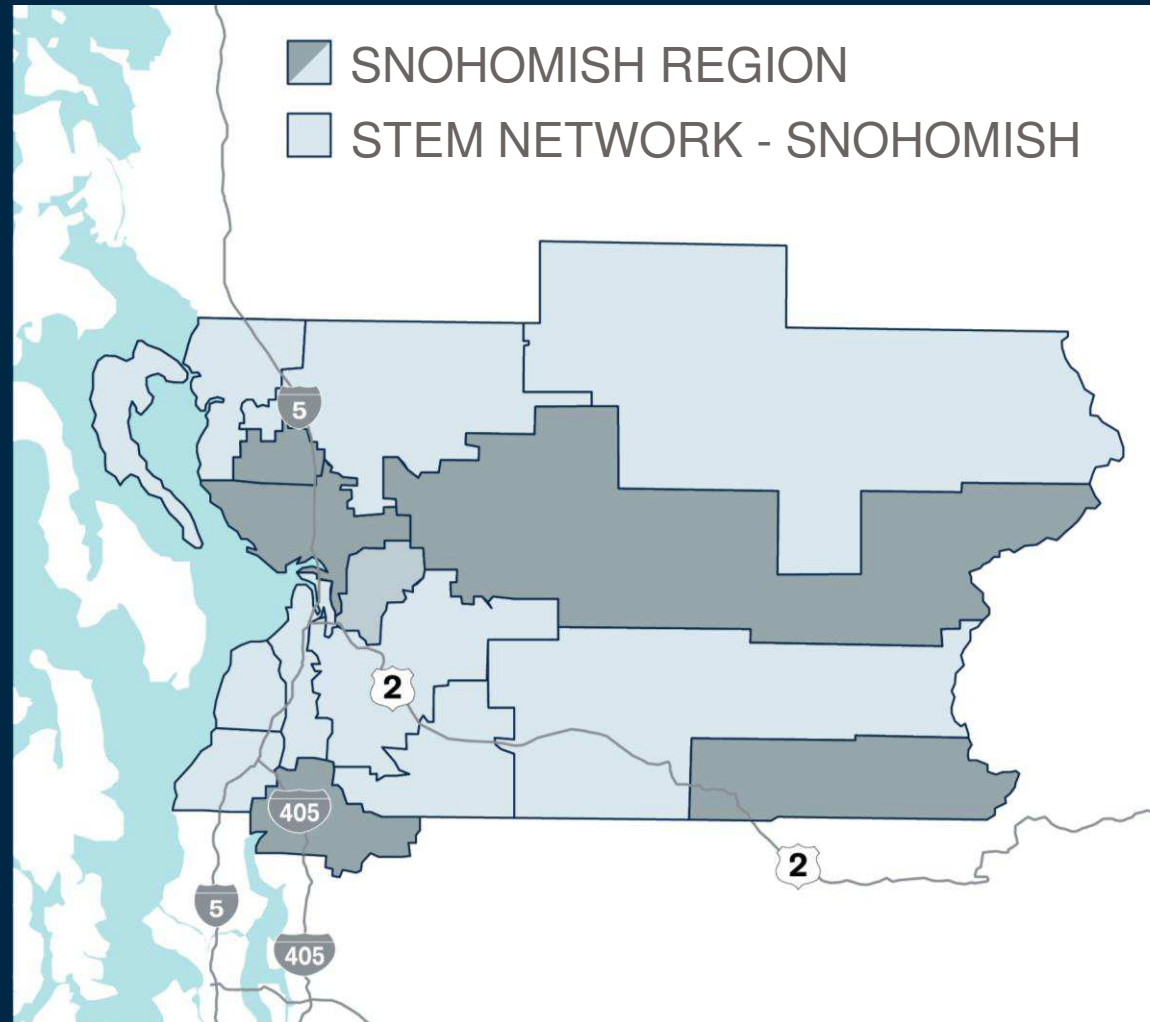
STUDENT OUTCOMES

- ↑ Early math readiness
- ↑ Third grade math performance
- ↑ Dual credit attainment
- ↑ Credential attainment

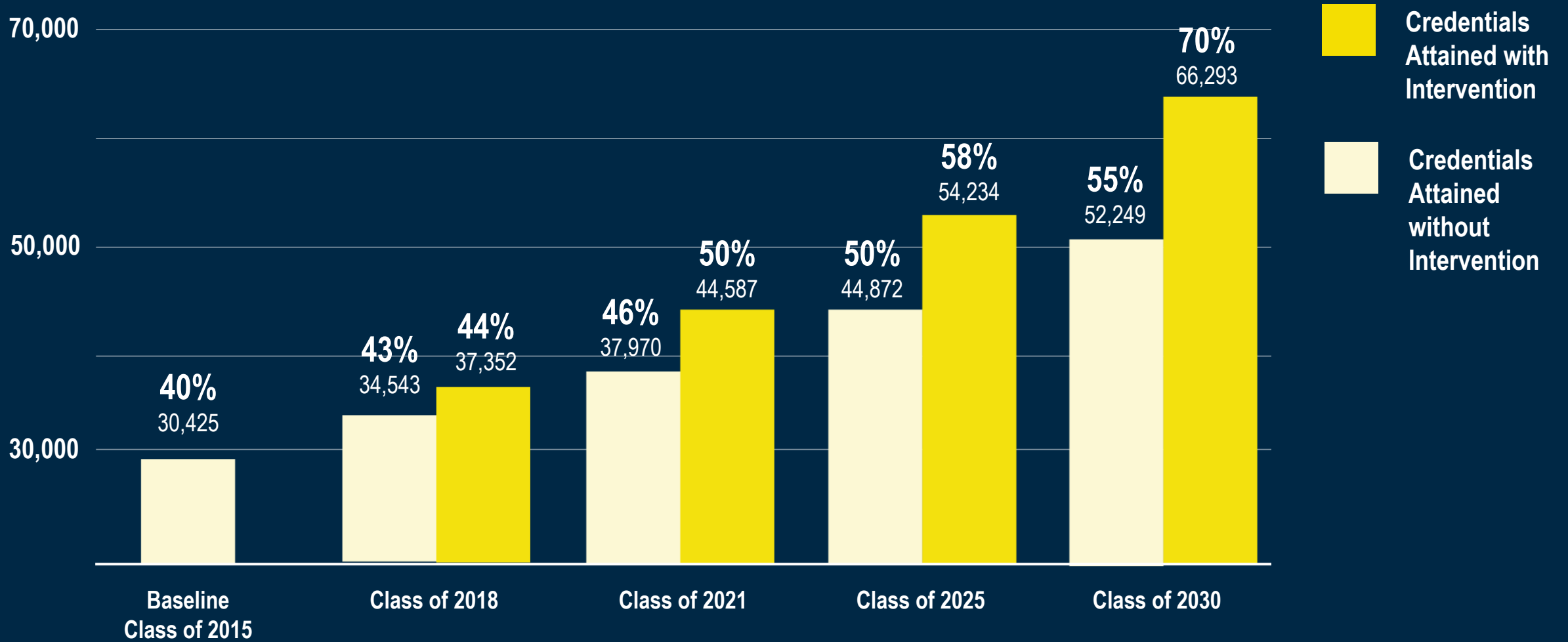


Annual targets to be set for each metric and tracked monthly or quarterly.

EXAMPLE: SNOHOMISH REGION

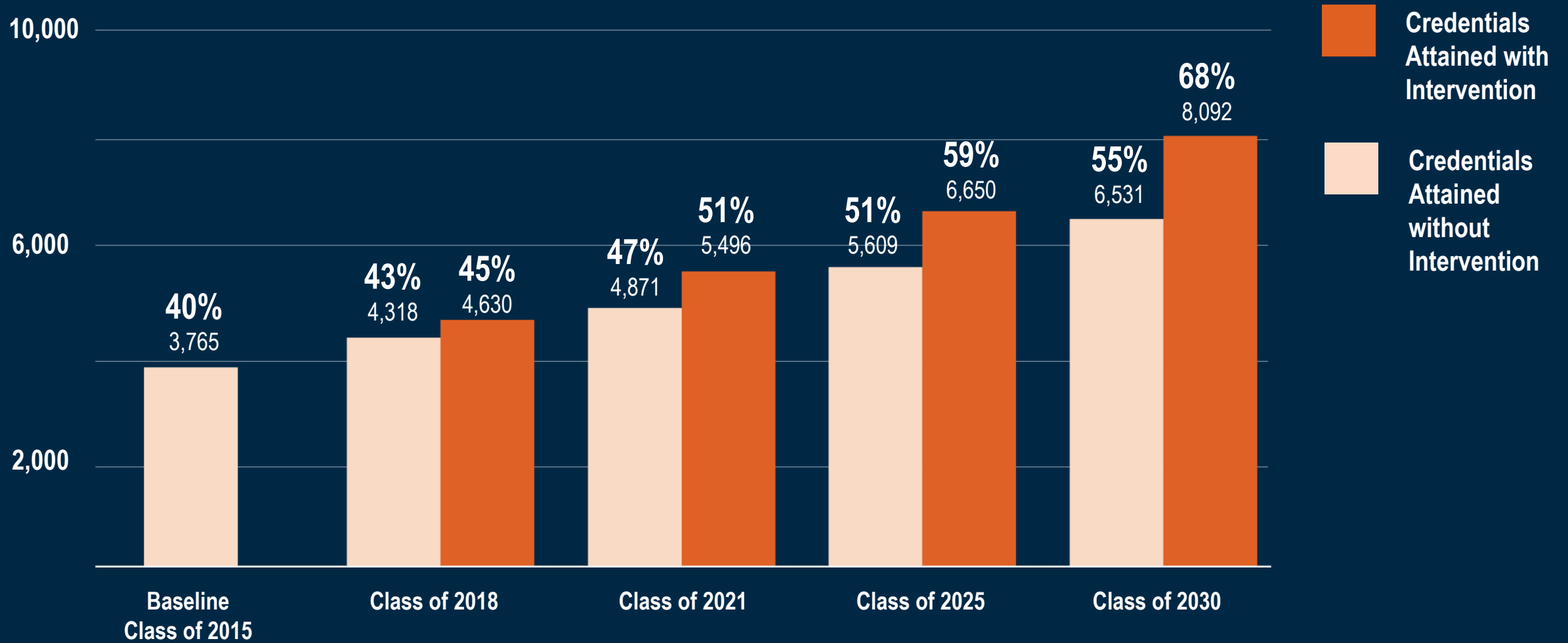


WASHINGTON STATE



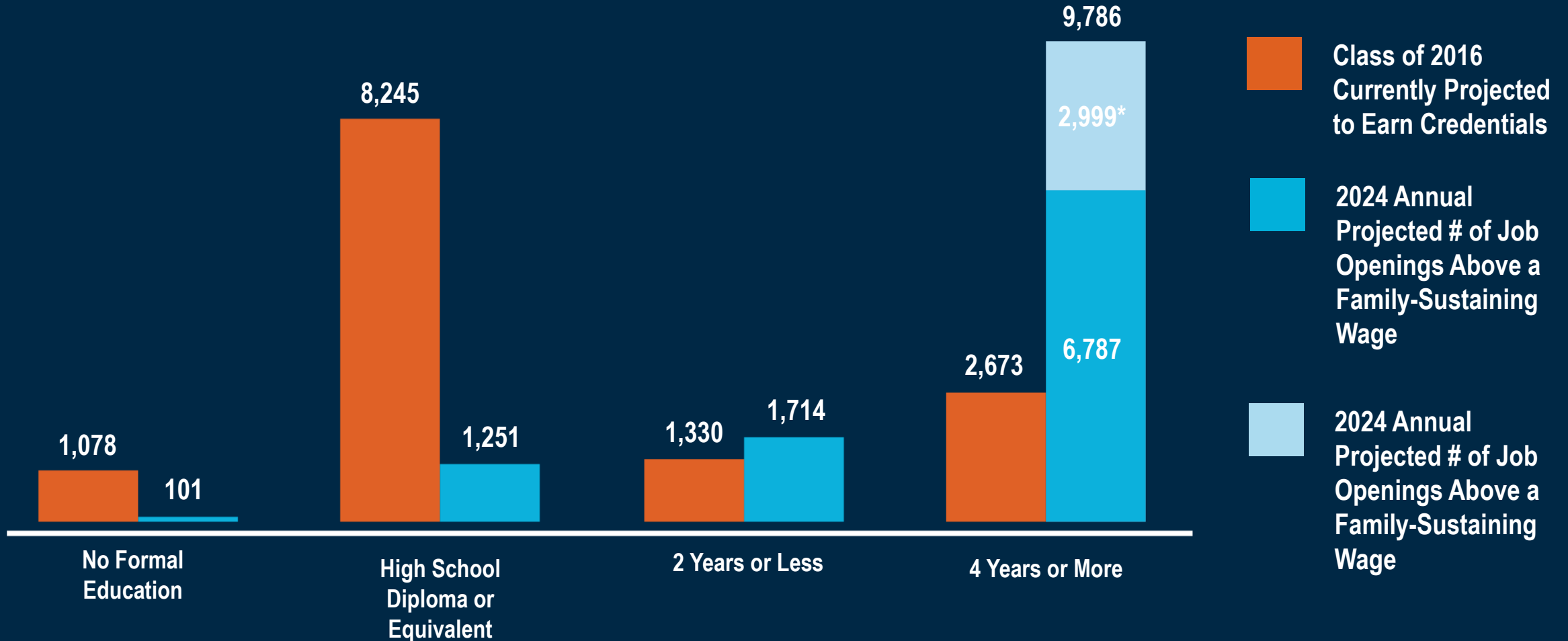
Measured six to eight years after high school graduation

198 MORE CREDENTIALS PER YEAR = REGION ON TRACK



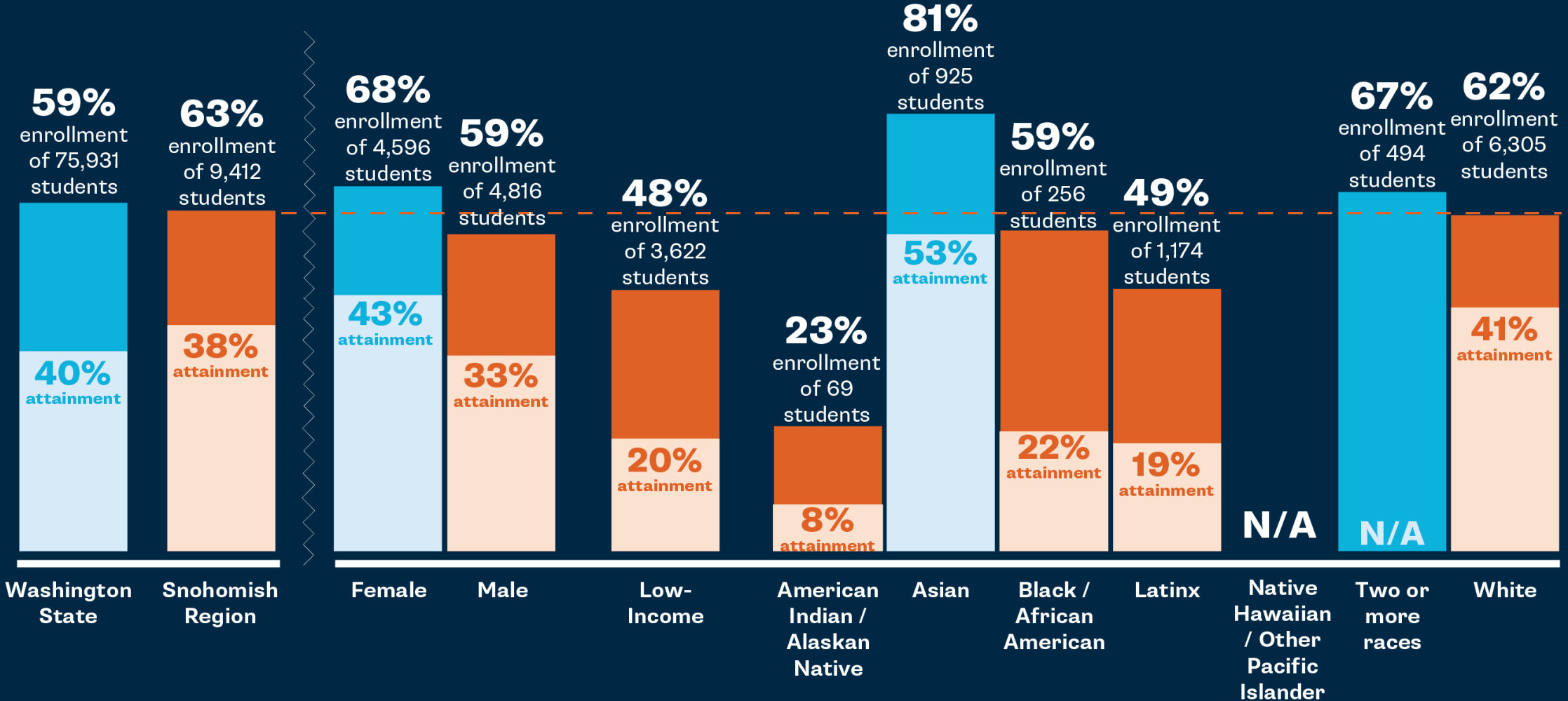
Measured six to eight years after high school graduation

SNOHOMISH REGION



*Over the next 12 years, there will be a surplus of jobs in King County compared to the number of new, local, credentialed individuals in King County. That means that if other regions throughout the state only attended to their own regional job openings, King County would be sorely under-supplied by Washington state-originating kids. This surplus represents a proportion of the surplus jobs that could be supplied by students from the Snohomish Region.

SNOHOMISH CREDENTIAL ENROLLMENT/ATTAINMENT



SNOHOMISH REGION INDICATORS BY DEMOGRAPHIC

SNOHOMISH REGION

MEDICAL ASSISTANTS & NURSES

Annual # of Openings: 998
Credential: Certificate → Bachelor's
Average Regional Wage:
\$52,907 → \$83,796

CONSTRUCTION & TRADES PROFESSIONALS

Annual # of Openings: 1,316
Credential: Apprenticeship
Average Regional Wage: \$65,455

ENGINEERS

Annual # of Openings: 478
Credential: Bachelor's
Average Regional Wage: \$103,032

COMPUTER & IT PROFESSIONALS

Annual # of Openings: 665
Credential: Certificate → Bachelor's
Average Regional Wage:
\$60,141 → \$119,338

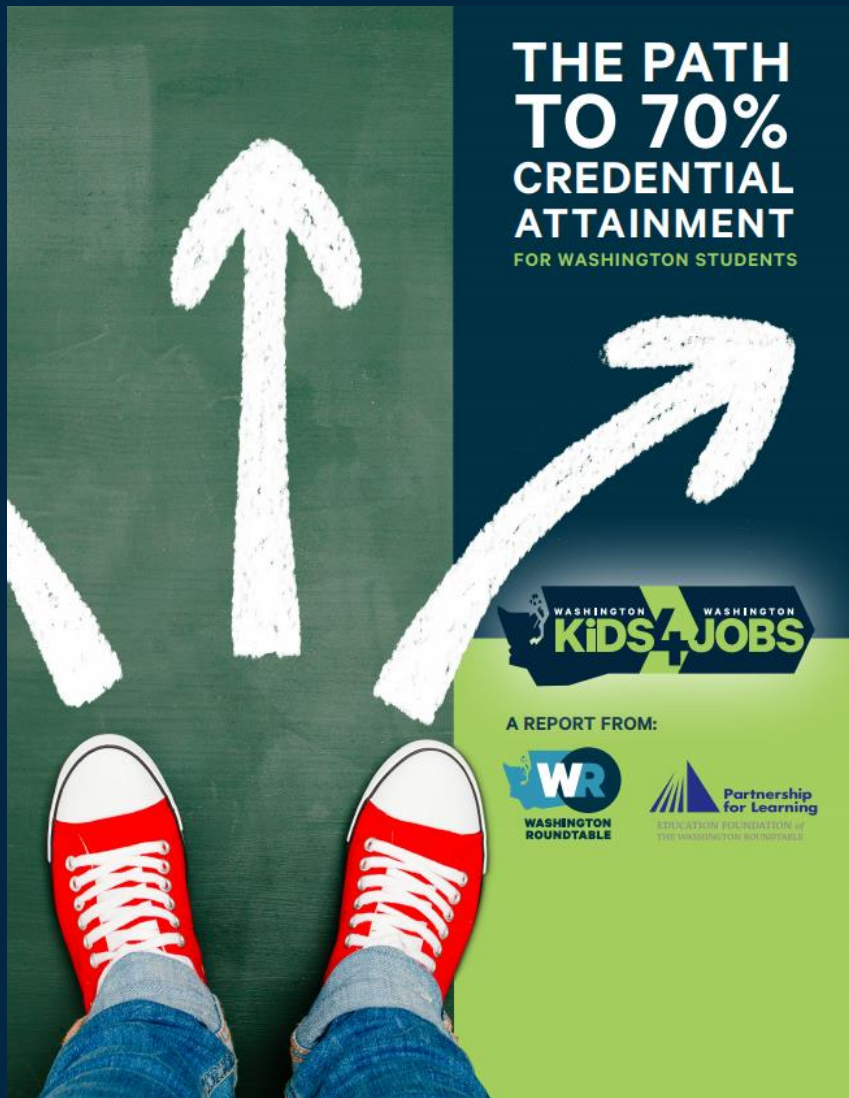
REGIONAL GOALS: SPOKANE AREA

	Annual Increase to Meet Goal*	Class of 2021 Credential Goal*	Class of 2025 Credential Goal*	Class of 2030 Credential Goal*
WA State (adj. cohorts)	1,640	44,742	53,746	65,772
Eastern Region	123	3,630	4,309	5,193
Spokane STEM Network	102	3,018	3,583	4,317

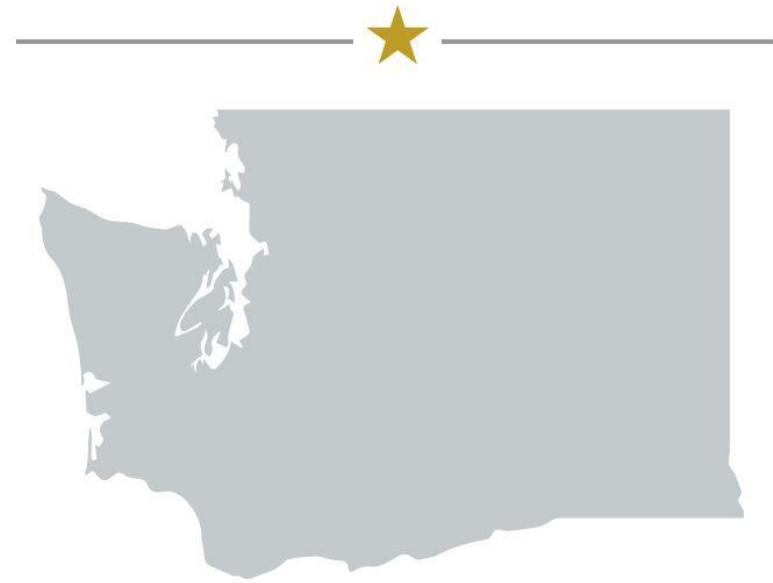
14 districts = 7 or 8 more completions/district/year

REGIONAL GOALS: KING COUNTY

	Annual Increase to Meet Goal*	Class of 2021 Credential Goal*	Class of 2025 Credential Goal*	Class of 2030 Credential Goal*
WA State (adj. cohorts)	1,640	44,742	53,746	65,772
King County (ALL)	491	11,569	14,252	17,993
SOUTH King County	205	4,828	5,948	7,510
NORTH King County	66	1,551	1,911	2,413
EAST King County	129	3,038	3,743	4,725
City of SEATTLE (Seattle Public Schools)	91	2,151	2,650	3,346



Report, Fact Sheet, Infographic, More:
CredentialEssential.com



WASHINGTON
STUDENT ENGAGEMENT NETWORKS

Symposium materials available for download. Visit www.WA-SEN.org